



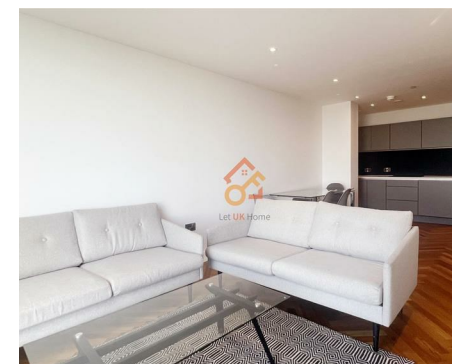
Let **UK** Home

**2 Bedrooms**

**Flat**

**Located  
in Manchester**

**£2,450 Per Month**



[padmin@letukhome.co.uk](mailto:padmin@letukhome.co.uk)

<https://www.letukhome.co.uk/>

01615219812



# 9 Owen Street Manchester

M15 4TT



Let UK Home are excited to offer this stunning and spacious two-bedroom apartment in Manchester's premiere residential address, Deansgate Square.

This property comprises a large bright open plan kitchen and living room, two double bedrooms with wardrobes (master en-suite), a large family sized bathroom and ample storage.

The residents of this development will have access to a concierge service with a cafe, state of the art gym, swimming pool, spa, sauna, yoga and fitness studios.

Deansgate Square sits in an enviable location benefitting from all Manchester has to offer. Just off Deansgate Train Station and Metrolink stop, a few minutes walk to Oxford Road Train Station, and the vibrant Spinningfields area, known for its cool bars and restaurants.

Whilst Deansgate offers a host of independent bars, restaurants and shopping, Regent Road retail park is also situated nearby with a large Sainsbury's, TK Maxx, Boots, and much more on offer. For sport and entertainment, Manchester's famous football stadiums Old Trafford (home to Manchester United) and the Etihad (home to Manchester City) are just a stone away. For cultural activities, locally residents are only within walking distance from Castlefield Bowl which often hosts an array of food festivals and music gigs.

It's just a walk from the development to the University of Manchester's North and South campuses, and getting to Manchester Metropolitan University is also very convenient.

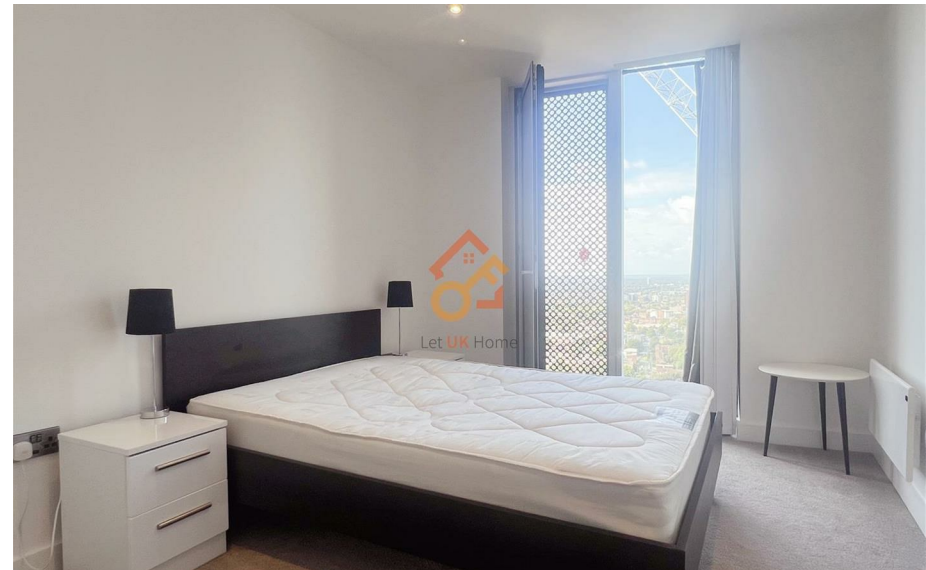
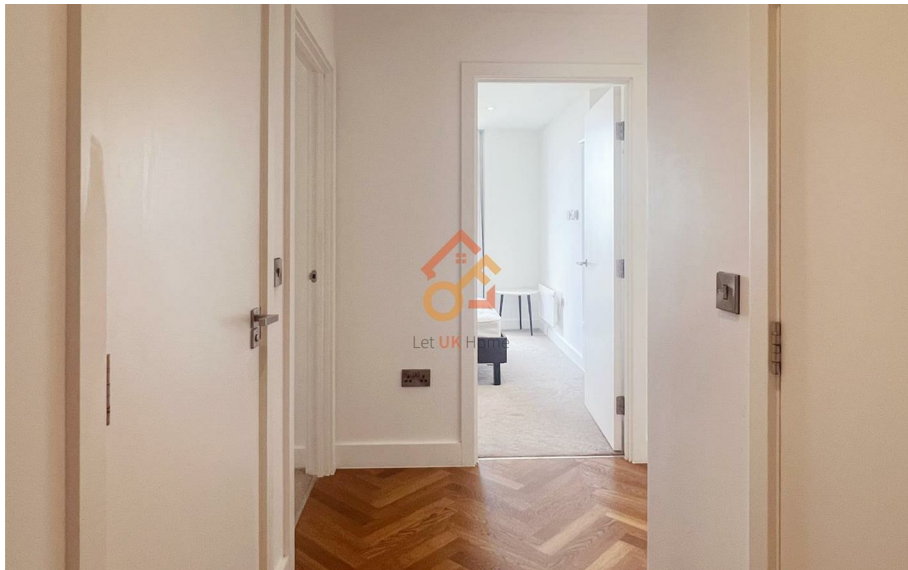
# 9 Owen Street Manchester

## £2,450 Per Month



- 37th Floor
- Sauna & Steam Room
- Yoga Room & The Gym
- Walk to University of Manchester
- EPC Rating: B

- Concierge Service & 24h Security
- Swimming Pool
- Deansgate Square
- Near Deansgate-Castlefield





**Total floor area** 70 square metres



Let **UK** Home

1/F, St James Tower 7 Charlotte  
Street  
Manchester  
M1 4DZ

01615219812

[pmadmin@letukhome.co.uk](mailto:pmadmin@letukhome.co.uk)

**Council Tax Band: F**

**Local Authority:**

Agents Note: Whilst every care has been taken to prepare these particulars, they are for guidance purposes only. All measurements are approximate and are for general guidance purposes only and whilst every care has been taken to ensure their accuracy, they should not be relied upon and potential buyers/tenants are advised to recheck the measurements.

Energy Efficiency Rating		Current	Potential
Very energy efficient - lower running costs			
(92 plus) <b>A</b>			
(81-91) <b>B</b>		85	85
(69-80) <b>C</b>			
(55-68) <b>D</b>			
(39-54) <b>E</b>			
(21-38) <b>F</b>			
(1-20) <b>G</b>			
Not energy efficient - higher running costs			
<b>England &amp; Wales</b>	EU Directive 2002/91/EC		

<https://www.letukhome.co.uk/>